

Let Cotterell brighten up your home



Sparkling choice: Choose an exquisite chandelier for a real touch of glamour.

Advertisement feature

SCOTLAND'S biggest and brightest lighting centre has just opened a new showroom in the North-East.

Cotterell Light Centres opened last weekend on the North Tyne Industrial Estate, opposite the Benton Asda.

The 10,000 sq ft showroom features a vast array of both traditional and modern lighting, sourced for every room with well-known designer names such as Philippe Starke, and Castiglioni from Flos.

You'll find everything from contemporary hand-blown Murano glass pendants to exquisite crystal chandeliers from the Czech Republic; from intricate reproduction Tiffany glass designs to exclusive jewel-like coloured fused glass wall lights individually signed by French artist Clarisse Dutraive.

Co-owner Lorraine Cotterell said: "We visit trade shows around the world to bring our customers the very latest in lighting for both indoors and outdoors. We've got everything to suit all budgets from top quality Italian designer lamps to voile fabric shades."

Also available is a good range of LED lights, which can be recessed into floors or walls, or fibre optics which can be even used to create the Milky Way on your bedroom ceiling! Cable track light systems can be

tailored to customers' specifications and there is also a children's section and Christmas lights.

The extensive lighting on display is enhanced by an eclectic range of furniture and quirky accessories forming several room sets. These include chocolate leather sofas and chairs, leather table lamps, driftwood dining sets, hand-carved footstools, and original batik wall hangings from Thailand, to name but a few. There's even a conservatory displaying ceiling fans.

But most importantly, customers can be assured that all staff are fully trained to offer expert guidance when it comes to choosing lighting, especially those tricky areas such as the bathroom, kitchen and garden.

A home consultancy service is available for larger projects so clients can integrate their lighting ideas at the earliest possible stage.

Cotterell Light Centres also works extensively with interior designers and trade customers such as builders, architects and electricians and can offer trade packages and commercial consultancy.

● *Cotterell Light Centres, North Tyne Industrial Estate, Benton, Tyne & Wear, tel: (0191) 266-8883 or visit the website at www.cotterell-lightcentres.com.*



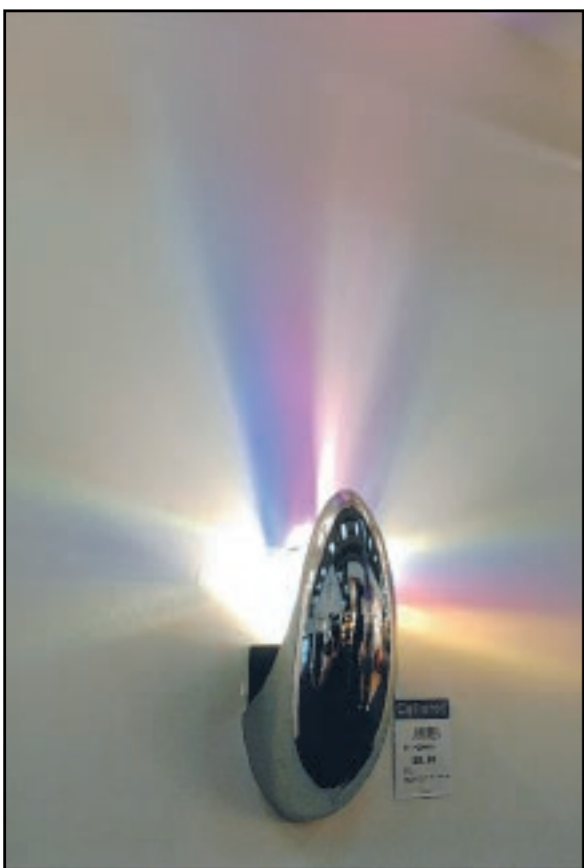
Lamps galore: Cotterell Light Centres has a superb collection of lamps designed specially for children.



Space age: Lighting fit for the space age.



Modern twist: The Reed pendant – a modern take on the traditional chandelier.



Smooth and sleek: A modern silver uplighter.

Design tips

● Ideally thought should be given to the overall lighting scheme at the earliest stage of decorating to allow for the correct wiring to be put in place for wall lights, picture lights, floor and skirting lighting, recessed downlights etc.

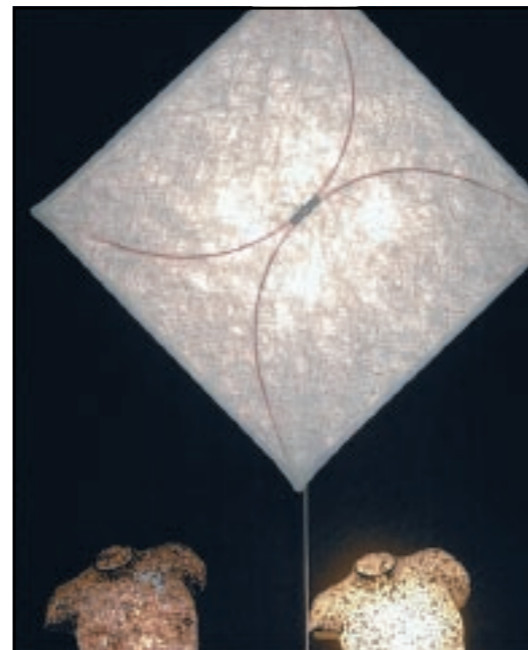
Lighting is not the finishing touch to be thought about at the end of the project.

● Most rooms are used for a number of different functions and you should keep this in mind when choosing lighting for a room and keep it as flexible as possible.

● The colour of the room, paint finishes and soft furnishings will affect light levels as darker walls soak up the light. The height of your ceiling is also an important consideration and will affect what styles and options are available.

● There are certain regulations in relation to bathroom lighting. Cotterell Light Centres staff are trained to give you the correct advice and there is a large selection of lighting suitable for bathrooms, including the newly much more affordable LED technology for bathroom floors – or even in the bath.

For the young at heart: Don't forget the children when you're planning to brighten up your home.



Sophisticated: These unusual Torso lamps give a touch of something really special.